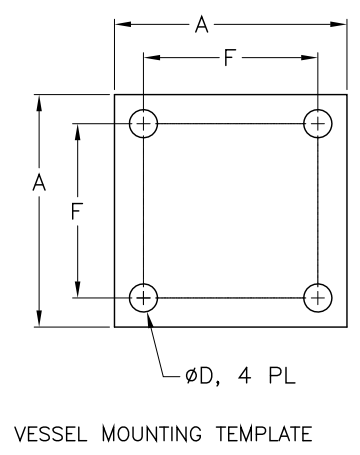
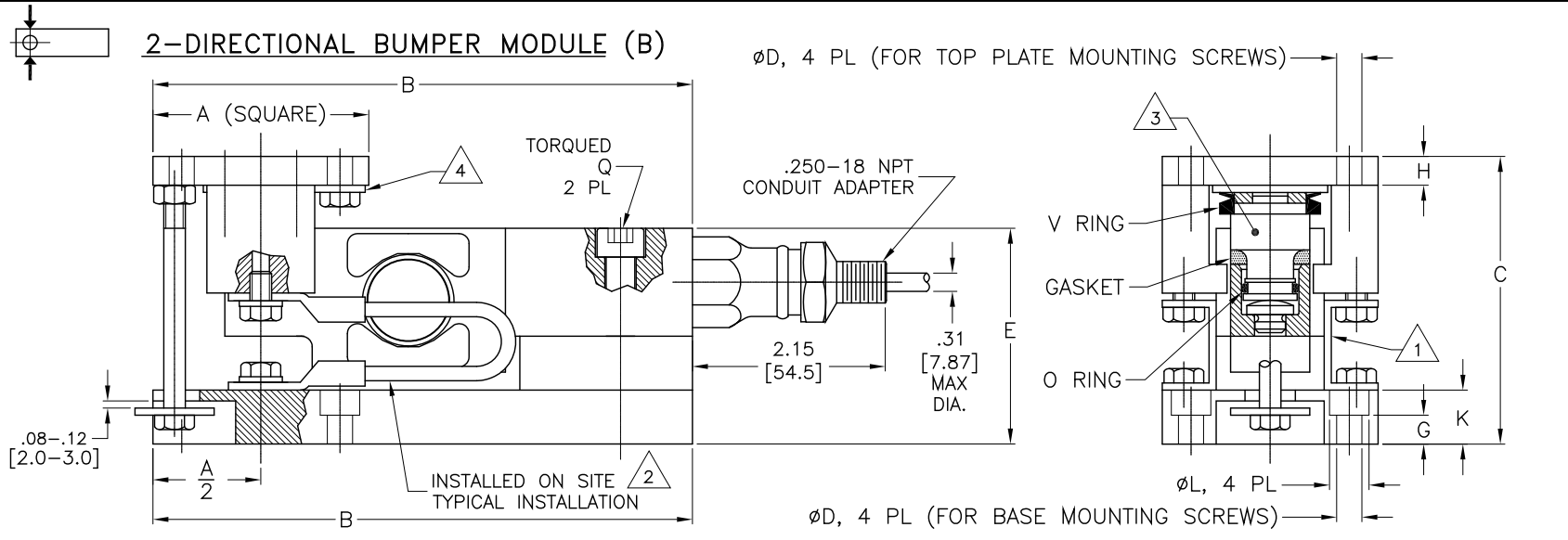
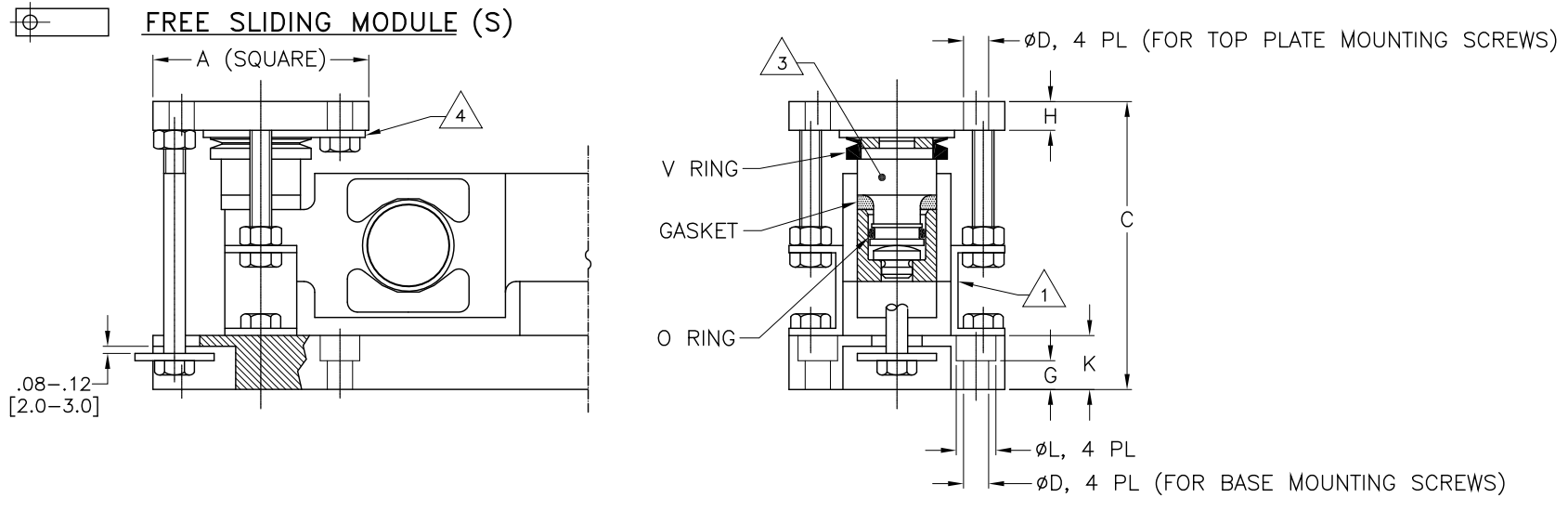
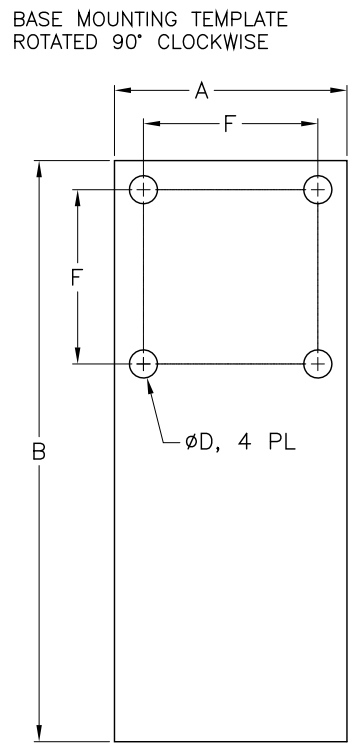
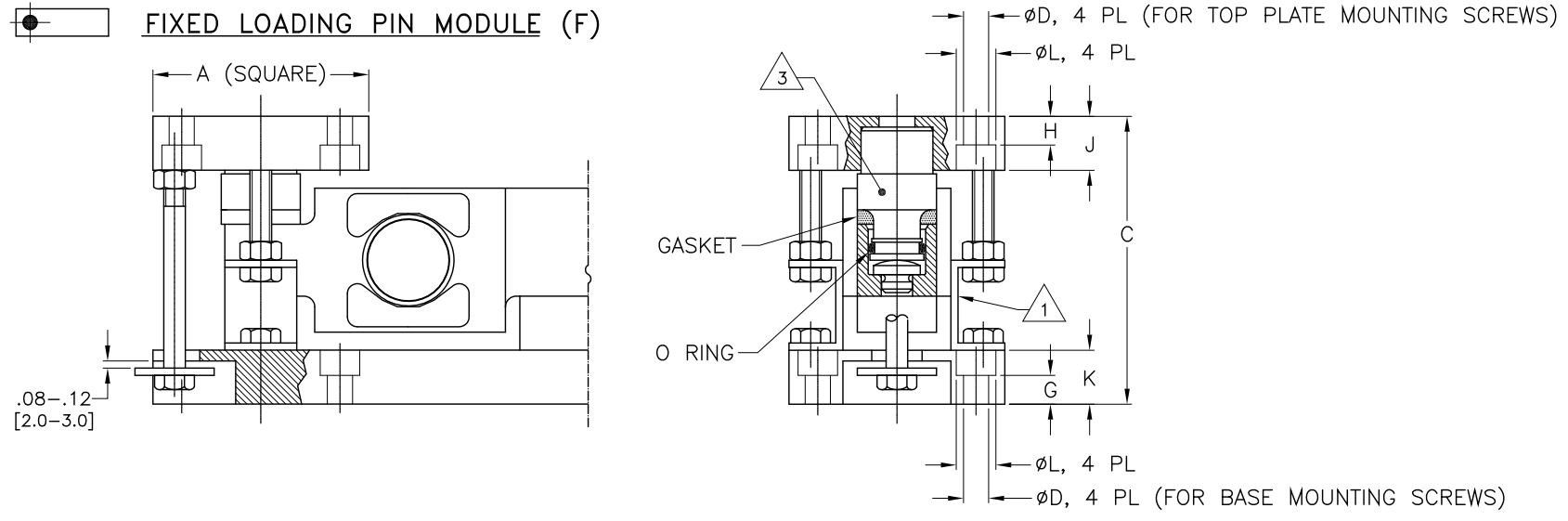


REV.	ECO/DDC	DESCRIPTION	DATE	DRAFT	CHECK	APV'D
A	08107	RELEASED.	07-09-01	L.B.O.	S.N.	V.J.C.
B	10762	REVISED PER ECN.	02-15-10	V.J.C.	C.B.	V.J.C.
C	11302	REVISED PER ECN.	06-27-13	V.J.C.	N.H.S.	V.J.C.



W/ STAINLESS STEEL MOUNTS		W/ PLATED STEEL MOUNTS	
MODEL NO.	PART NUMBER	MODEL NO.	PART NUMBER
HI LPB44-43B	0555-0009-01	HI LPB44-45B	0555-0009-11
HI LPB44-43F	0555-0009-02	HI LPB44-45F	0555-0009-12
HI LPB44-43S	0555-0009-03	HI LPB44-45S	0555-0009-13
HI LPB110-43B	0555-0010-01	HI LPB110-45B	0555-0010-11
HI LPB110-43F	0555-0010-02	HI LPB110-45F	0555-0010-12
HI LPB110-43S	0555-0010-03	HI LPB110-45S	0555-0010-13
HI LPB225-43B	0555-0011-01	HI LPB225-45B	0555-0011-11
HI LPB225-43F	0555-0011-02	HI LPB225-45F	0555-0011-12
HI LPB225-43S	0555-0011-03	HI LPB225-45S	0555-0011-13
HI LPB450-43B	0555-0012-01	HI LPB450-45B	0555-0012-11
HI LPB450-43F	0555-0012-02	HI LPB450-45F	0555-0012-12
HI LPB450-43S	0555-0012-03	HI LPB450-45S	0555-0012-13



12. SEE SHEET 2 FOR ULTIMATE FORCE DATA.
11. THIS DRAWING IS SUBJECT TO CHANGE WITHOUT NOTICE.
10. CABLE WIRE ENDS ARE STRIPPED BACK 0.5 IN. AND TINNED. CABLE JACKET IS STRIPPED BACK APPROX. 5 IN.
9. LOAD SENSOR IS STAINLESS STEEL 17-4PH (1.4548).
8. CABLE IS 6 CONDUCTOR, SHIELDED AND 10 FT. IN LENGTH. CABLE SHIELD IS FLOATING.
7. DO NOT WELD AFTER LOAD SENSOR IS INSTALLED.
6. WEIGHT EXCLUDES PACKAGING.
5. C2 WIRE COLOR CODE FLAG LABEL IS FOUND APPROXIMATELY 10 INCHES FROM END OF CABLE.

EXCITATION +	RED
EXCITATION -	BLACK
SIGNAL +	GREEN
SIGNAL -	WHITE
C2 +	GRAY
C2 -	VIOLET
SHIELD	YELLOW

- 4 POLISHED STAINLESS STEEL LOAD PLATE.
- 3 LOADING PINS.
- 2 INSTALL GROUND STRAP USING LOWER BOLTS FROM THE SHIPPING BRACKETS. ASSEMBLE GROUND STRAP ONTO ONE SIDE OF CELL ONLY USING A SET OF SHIPPING BRACKET MOUNTING HOLES FROM ONE SIDE ONLY. THIS WILL CONNECT GROUND FROM THE BASE TO THE TOP PLATE. DO NOT CROSS THE STRAP OVER THE CELL.
- 1 SHIPPING BRACKET, 2 PL, TO BE REMOVED FOR INSTALLATION. DISCARD UPPER BOLTS, SAVING LOWER BOLTS FOR INSTALLATION OF GROUND STRAP.

NOTES: UNLESS OTHERWISE SPECIFIED

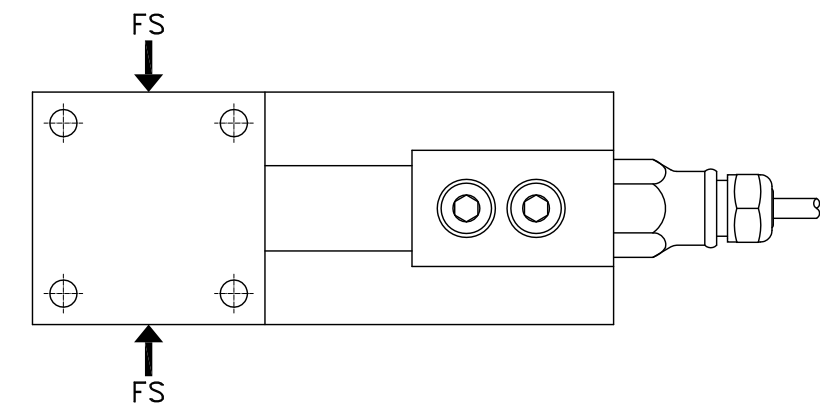
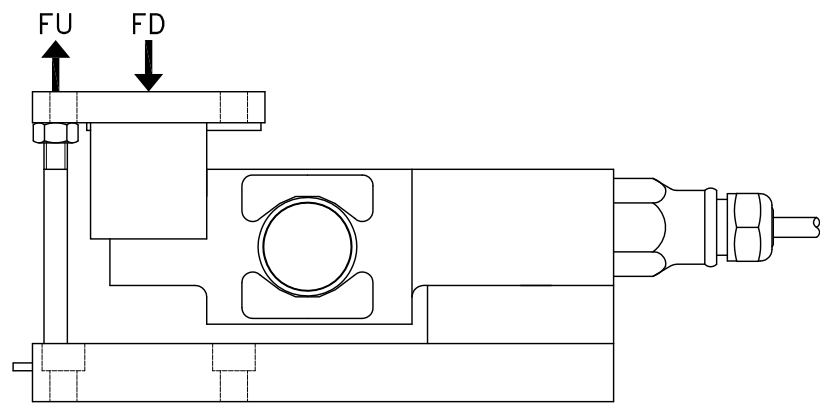
DIMENSIONS- INCHES & [mm]

CAPACITY LBS [kg;kN]	A	B	C	ØD	E	F	G	H	J	K	ØL	Q FT LBS	MOUNT SCREW	WEIGHT LBS
44, 110; 225, 450 [20] [50] [1] [2]	2.36 [60.0]	5.91 [150.0]	3.15 [80.0]	0.276 [7.00]	2.36 [60.0]	1.73 [44.0]	0.315 [8.00]	0.315 [8.00]	0.59 [15.0]	0.59 [15.0]	0.433 [11.00]	18.5 [25Nm]	.250	6

		0588-0078	OUTLINE DRAWING, LOAD POINT, HI LPB SERIES		
ITEM	QTY	PART NUMBER	DESCRIPTION	COMMENTS	
PARTS LIST					
UNLESS OTHERWISE SPECIFIED DIMENSIONS ARE IN INCH [MM] FIRST ANGLE PROJECTION		CONTRACT NO.		 OUTLINE DRAWING, LOAD POINT, HI LPB SERIES	
		APPROVALS			
DRAWN		DATE			
CHECKED		DATE			
APPROVED		DATE			
ISSUED		DATE			
PRODUCTION		DATE			
MATERIAL		DATE		SIZE	FSCM
FINISH		DATE		DRAWING NO.	
DO NOT SCALE DRAWING		DATE		D	21316
				0588-0078	
				REV.	C
		FILE NAME: 588078C1.DWG		SCALE: NONE	SHEET 1 OF 2

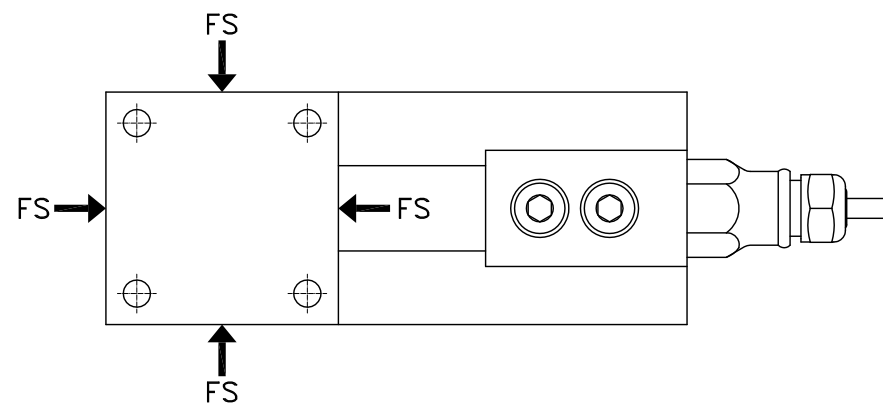
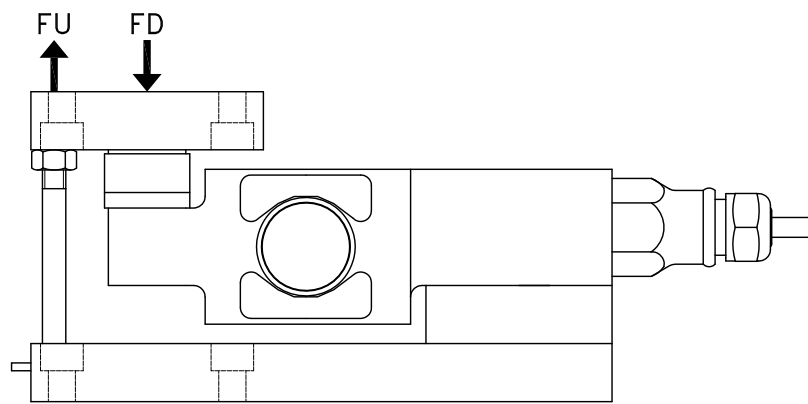
PROPRIETARY NOTICE
ALL DATA AND INFORMATION CONTAINED IN OR DISCLOSED BY THIS DOCUMENT IS CONFIDENTIAL AND PROPRIETARY INFORMATION OF HARDY PROCESS SOLUTIONS INC. AND ALL RIGHTS THEREIN ARE EXPRESSLY RESERVED. BY ACCEPTING THIS MATERIAL THE RECIPIENT AGREES THAT THIS MATERIAL AND THE INFORMATION CONTAINED THEREIN IS HELD IN CONFIDENCE AND IN TRUST AND SHALL NOT BE USED, COPIED, REPRODUCED IN WHOLE OR IN PART, NOR ITS CONTENTS REVEALED IN ANY MANNER TO OTHERS, EXCEPT TO MEET THE SPECIFIC PURPOSE FOR WHICH IT WAS DELIVERED.

2-DIRECTIONAL BUMPER MODULE (B)



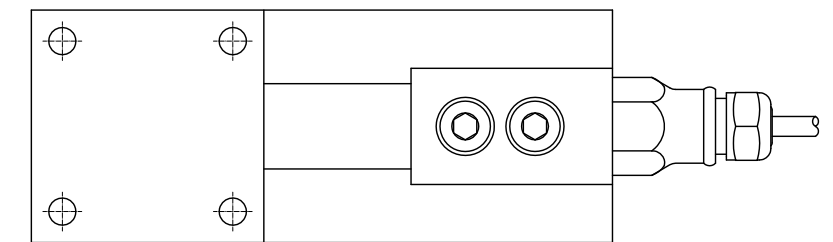
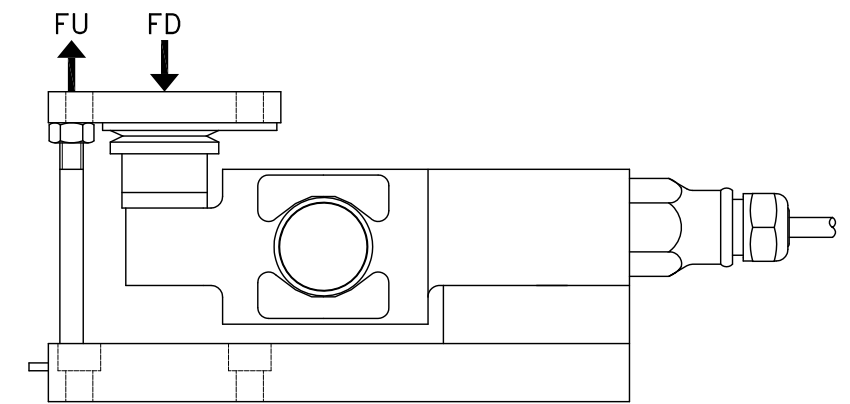
FS IN LATERAL DIRECTION
[LONGITUDINAL IS FREE SLIDING]

FIXED LOADING PIN MODULE (F)



FS IN ANY DIRECTION

FREE SLIDING MODULE (S)



HORIZONTAL FREE SLIDING

FD = ULTIMATE FORCE IN DOWNWARD VERTICAL DIRECTION [= 300% OF LOAD SENSOR CAPACITY]

FS = ULTIMATE SIDE FORCE IN HORIZONTAL DIRECTION [50% OF LOAD SENSOR CAPACITY]

FU = ULTIMATE FORCE IN UPWARD DIRECTION

CAPACITY	MODEL NUMBER	ULTIMATE FORCES					
		FD		FS		FU	
		KLB	KN	KLB	KN	KLB	KN
44 LBS	HI LPB44-43 & 45F, B, S	0.13	0.6	0.02	0.1	3.6	16.1
110 LBS	HI LPB110-43 & 45F, B, S	0.34	1.5	0.06	0.25		
225 LBS	HI LPB225-43 & 45F, B, S	0.67	3	0.11	0.5		
450 LBS	HI LPB450-43 & 45F, B, S	1.35	6	0.22	1		

HARDY
PROCESS SOLUTIONS

TITLE
OUTLINE DRAWING,
LOAD POINT, HI LPB SERIES

SIZE	FSCM	DRAWING NO.	REV.
D	21316	0588-0078	C
FILE NAME: 588078C1.DWG		SCALE: NONE	SHEET 2 OF 2

